

MARINER SANDS PLAT NO. 10

BEING A TRACT OF LAND LYING IN SECTIONS 31 AND 32, TOWNSHIP 38 SOUTH, RANGE 42 EAST, MARTIN COUNTY, FLORIDA. BEING A PART OF THE MARINER SANDS P.U.D.

I, Marsha Stiller, Clerk of the Circuit Court of Martin County, Florida, hereby certify that this plat was filed for record in Plat Book 10, Page 71, Martin County, Florida, public records, this day of _____, 1987.

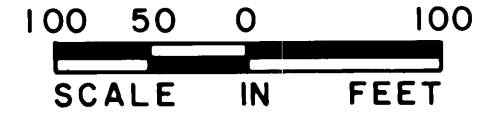
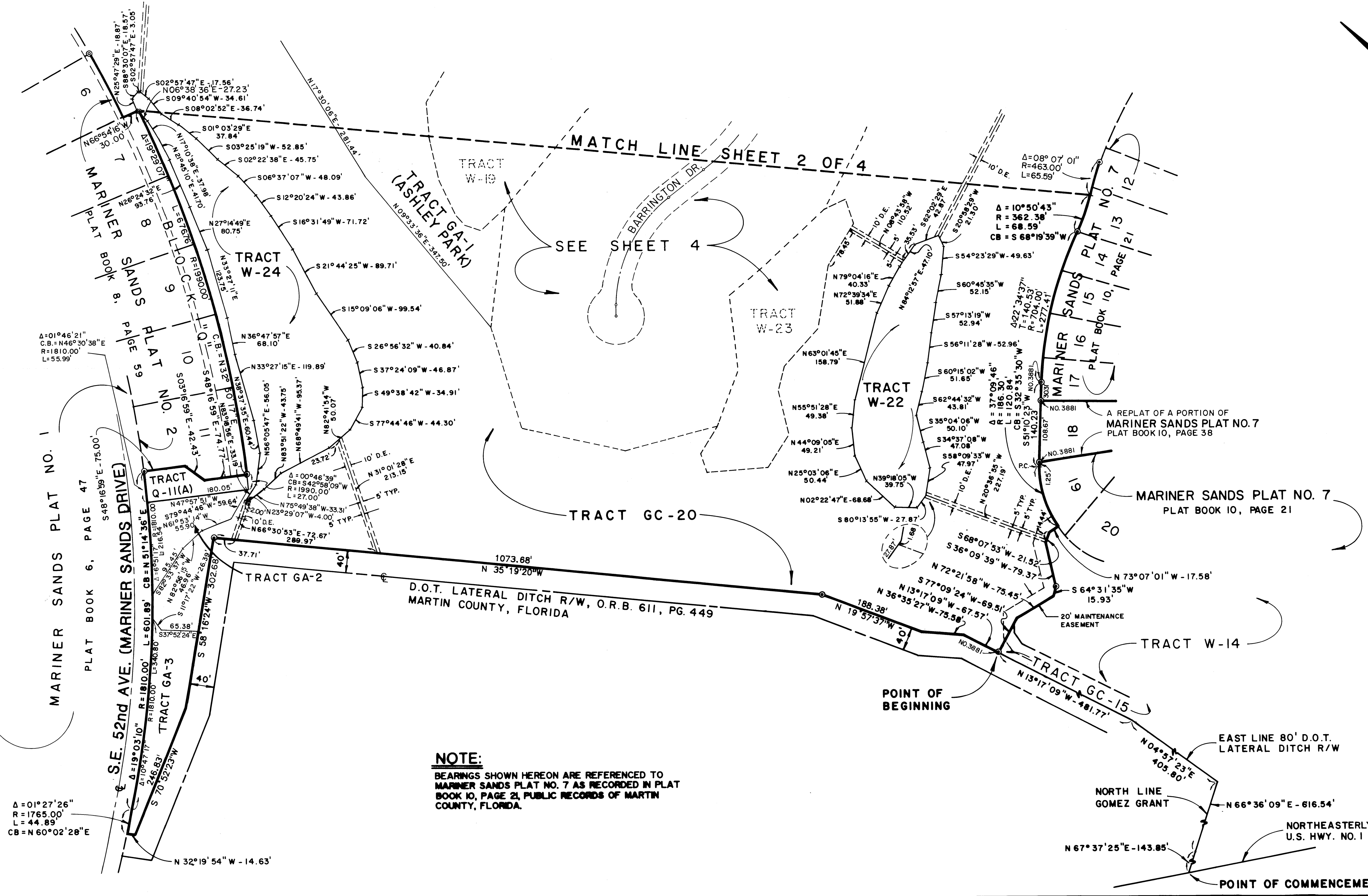
MARSHA STILLER, CLERK
CIRCUIT COURT
MARTIN COUNTY, FLORIDA

BY: _____
Deputy Clerk

File No. _____

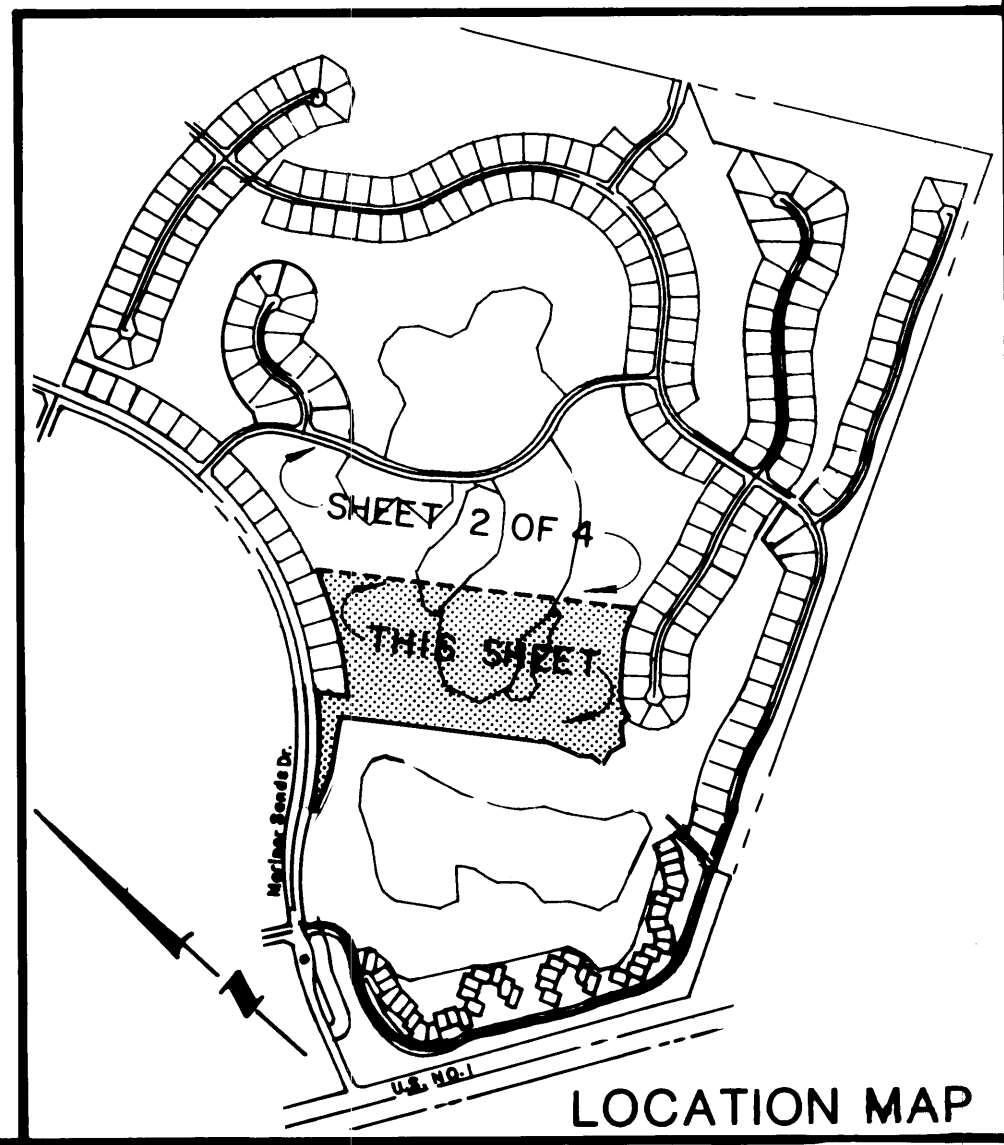
JANUARY 1987
SHEET 3 OF 4 SHEETS

Hutcheon Engineers
CIVIL ENGINEERS & SURVEYORS
WEST PALM BEACH
BELLE GLADE STUART



LEGEND

- ⊙ DENOTES PERMANENT REFERENCE MONUMENT (P.R.M.) FOUND.
- ⊙ DENOTES PERMANENT REFERENCE MONUMENT (P.R.M.) SET.
- W - DENOTES WATER TRACT.
- GC - DENOTES GOLF COURSE.
- DE - DENOTES DRAINAGE EASEMENT.



NOTE:
BEARINGS SHOWN HEREON ARE REFERENCED TO MARINER SANDS PLAT NO. 7 AS RECORDED IN PLAT BOOK 10, PAGE 21, PUBLIC RECORDS OF MARTIN COUNTY, FLORIDA.

Δ = 01°27'26"
R = 1765.00'
L = 44.89'
CB = N 60°02'28"E

Δ = 01°46'21"
C.B. = N 46°30'38"E
R = 1810.00'
L = 55.99'

Δ = 08°07'01"
R = 463.00'
L = 65.99'

Δ = 10°50'43"
R = 362.38'
L = 68.59'
CB = S 68°19'39"W

Δ = 140.53'
R = 704.00'
L = 277.41'

Δ = 37°09'46"
R = 120.84'
L = 140.23'

Δ = 00°46'39"
C.B. = S 42°58'09"W
R = 1990.00'
L = 27.00'

Δ = 37°09'46"
R = 120.84'
L = 140.23'

Δ = 140.53'
R = 704.00'
L = 277.41'

Δ = 37°09'46"
R = 120.84'
L = 140.23'

Δ = 140.53'
R = 704.00'
L = 277.41'

Δ = 37°09'46"
R = 120.84'
L = 140.23'

Δ = 140.53'
R = 704.00'
L = 277.41'

Δ = 37°09'46"
R = 120.84'
L = 140.23'

Δ = 140.53'
R = 704.00'
L = 277.41'

Δ = 37°09'46"
R = 120.84'
L = 140.23'

Δ = 140.53'
R = 704.00'
L = 277.41'

Δ = 37°09'46"
R = 120.84'
L = 140.23'

Δ = 140.53'
R = 704.00'
L = 277.41'